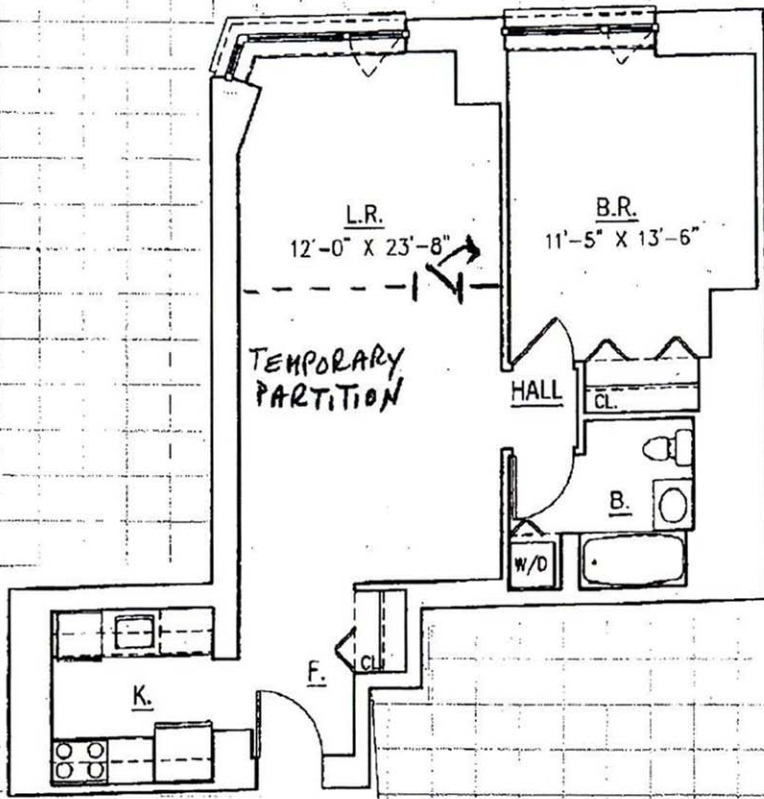
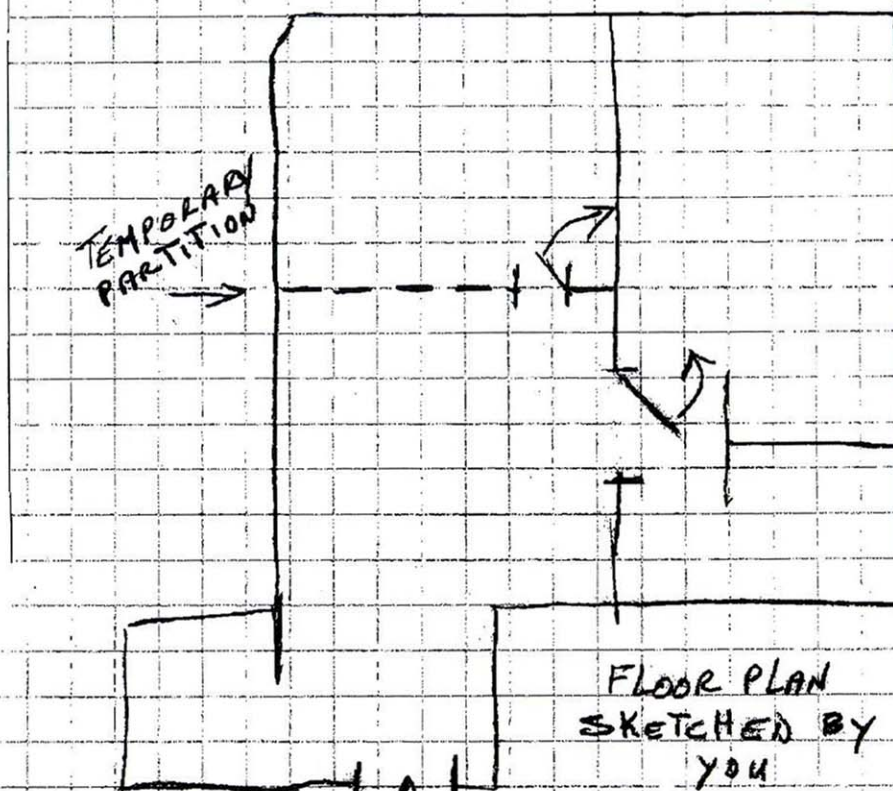


SAMPLE

SAMPLE



FLOOR PLAN
SUPPLIED BY YOUR
BUILDING



ENTRANCE

THE DOOR CAN BE PLACED ON THE LEFT OR RIGHT SIDE

The samples above indicate where the temporary partition will be placed as indicated by the dotted line.

The door can be placed on the left side or the right side. All we need is the height of your ceiling and the total length of the partition that you would like.

If you would like a different configuration, just indicate it on the floor plan or sketch. Please note: Not all configurations can be done and some may not be approved by your landlord.

Just enter your information on our Quote Form and submit it to us. If you don't know the size of the partition that you want, call us at (718) 361-5300. We may already have your information in our database.

